

Continuous or non-continuous Swing Spindle Multiple Head Payoff Stands

- Easy reel loading
- Fewer wire breaks
- Higher productivity
- Lower labor costs
- Less scrap

Individual tension capstans for each wire

Automatic stop/drop fingers for each wire

Arbors swing out for easy loading

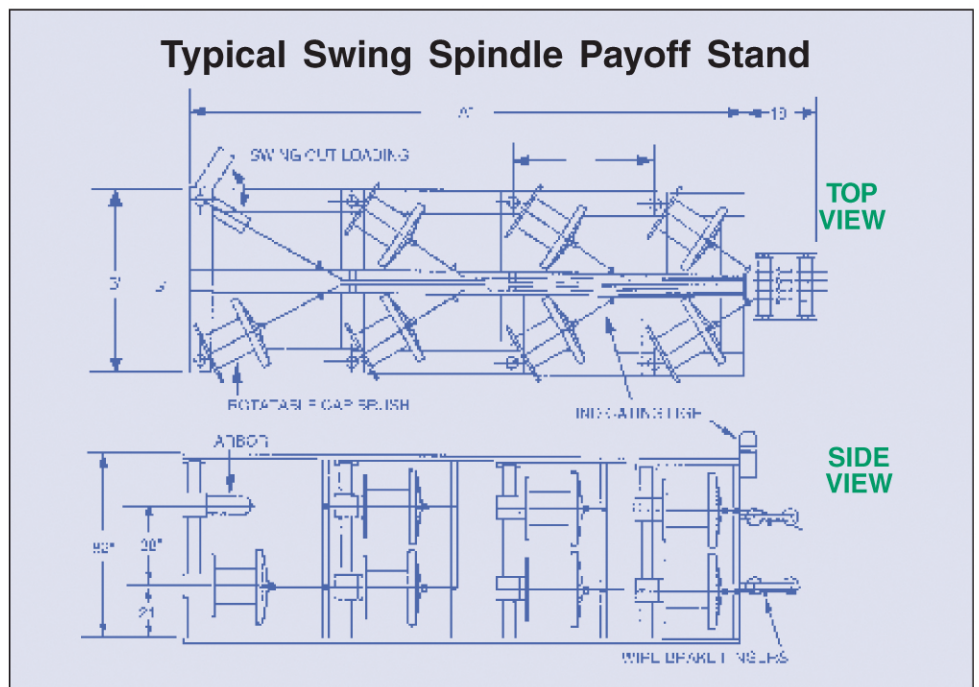


The Wyrepak multiple head payoff stand

to wire bunchers and other operations is a unitized payoff system including Wyrepak rotatable cap/tension brush units (see product data sheet **PD-1**). Any wire material, including copper, alloys, and aluminum, can be paid off from any size or type reels with wire breaks essentially eliminated, even in fine wire. Most insulated wire and some fiber optic material can also be processed with this Wyrepak system.

Standard Dimensions for Din 630 Reels		
# Wires	A	B
20	195" (4950 mm)	71" (1800 mm)
40	385" (9780 mm)	71" (1800 mm)
7	81" (2050 mm)	71" (1800 mm)
10	119" (3020 mm)	71" (1800 mm)
30	309" (7850 mm)	71" (1800 mm)

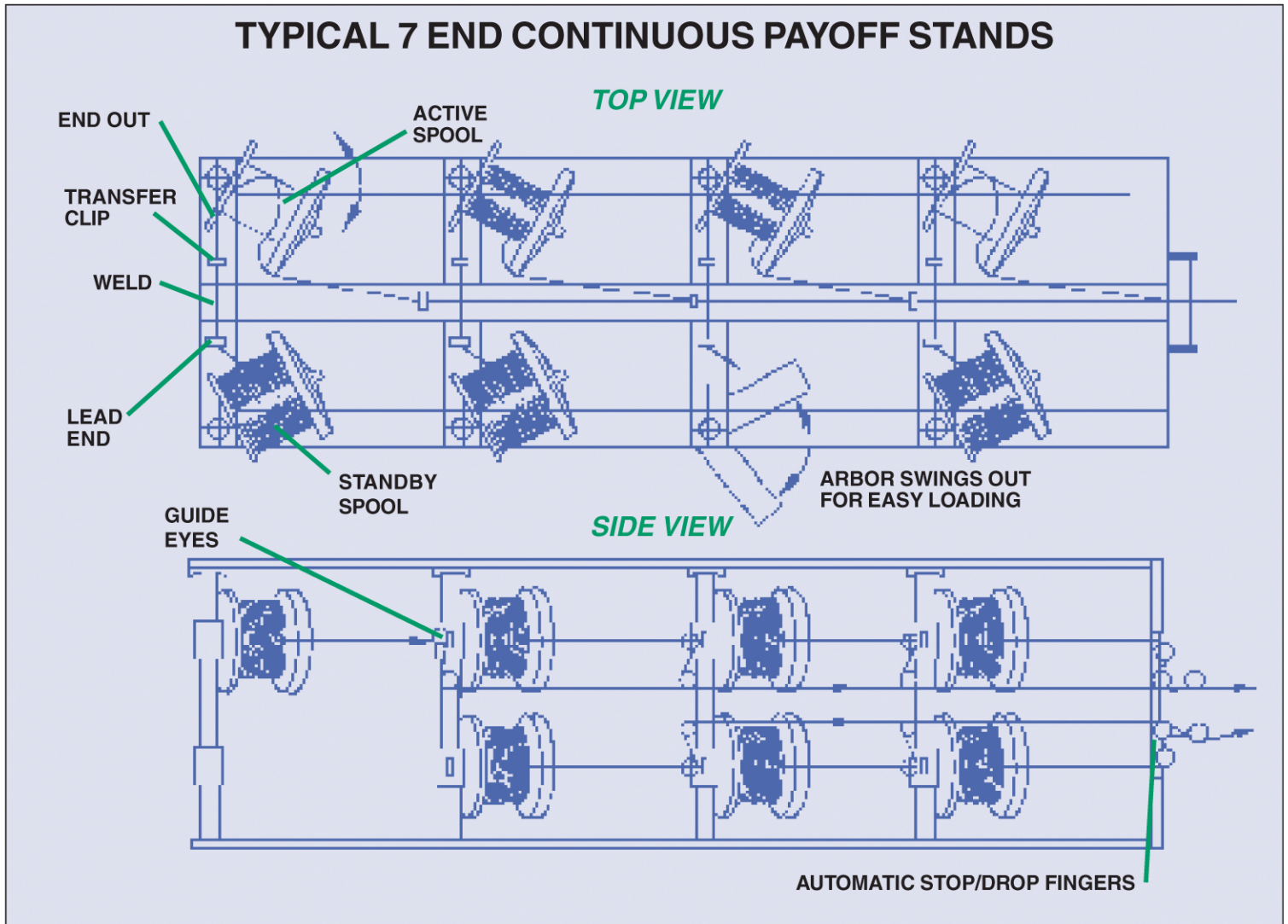
Continuous running is achieved by the provision of a standby spool opposite each active spool and welding the ends together. With continuous payoff there is a significant savings in down time, increase in production, no waste, and improved production costs.



WYREPAK INDUSTRIES

Designers and manufacturers of PAYOFF and TENSION CONTROL equipment for wire and cable

68 Buttonwood St., Bristol, RI 02809 USA
 Phone: 401-253-5500 • Fax: 401-253-7350 • e-mail: hfancher@wyrepak.com



GENERAL FEATURES

- **Electric Stop Fingers:** Standard on all Wyrepak payoff stands.
- **Easy Loading:** Spindles for reels swing out for quick and easy operator loading from sides and aisles.
- **Strong Construction:** The frame is composed completely of welded steel pipe and channel steel with a steel base. This rugged unit moves easily to different shop locations.
- **Optional footage counter:** An automatic preset machine stop footage counter (up to one million feet [305,000 meters]) is available.
- **Additional tension control:** A variety of devices can be added when more precise control is required.
- **Payoff stands can be built to accommodate two different size spools** and, if required, one section can be continuous while the other remains noncontinuous.